

5-15  
kWh

## 247 supercap energy storage datasheet Residential Energy Storage Series 5,5 – 10 – 15kWh



### FEATURES

- GRAPHENE SUPERCAPACITOR CELLS
- SAFEST TECHNOLOGY
- ULTRA LONG CYCLE LIFE
- EXTREME TEMPERATURE
- HIGHEST ENERGY TRANSFER EFFICIENCY
- EASY TO INSTALL
- LOW MAINTENANCE

### PERFORMANCE SPECIFICATIONS

Part Number	247 RES 5.5 P	247 RES 10 S	247 RES 15 P
Energy storage / capacity	5.5kWh / 105Ah	10kWh / 210Ah	15kWh
Nominal Voltage	51,8V/DC	51V/DC	51,8V/DC
Maximum Charge Voltage	58V/DC	57V/DC	58V/DC
Discharge Cut-off Voltage	42V/DC	44V/DC	42V/DC
Configuration	14S5P	16S7P	14S14P
ESR/AC @1KHz 50% SOC	<8mΩ	<9mΩ	<6mΩ
Max. Continuous Charge Current	100A	100A	100A
Max. Continuous Discharge Current	100A	100A	100A
Cooling Method	Natural	Natural	Natural
Cells Self-discharge Rate	2% per month	2% per month	2% per month
Projected Cycle Life (25°C) <sup>1</sup>	20.000 times	10.000 times	20.000 times
Round Trip Efficiency	97%	97%	97%
Recommended Depth of Discharge	≤90%	≤90%	≤90%
Maximum Depth of Discharge	100%	100%	100%
Shell Material	Metal & ABS plastic	Metal & ABS plastic	Metal & ABS plastic
Monitoring Data	Voltage, current, SOC, state, temperature	Voltage, current, SOC, state, temperature	Voltage, current, SOC, state, temperature
Series Connection	Not allowed	Not allowed	Not allowed
Parallel Connection	Up to 16 sets	Up to 16 sets	Up to 16 sets
Series-Parallel Connection	Not allowed	Not allowed	Not allowed

<sup>1</sup> At room temperature 25°C, charge-discharge at 100A.

#### 247 Energy BV

Schaarbeekstraat 20 E1.1, 9120 Bevere, Belgium  
Steenoven 44, 5626 DK Eindhoven, The Netherlands  
+32 3331 0000 – storage@247.energy – 247storage.energy

247  
ENERGY

**5-15**  
kWh

## 247 supercap energy storage datasheet Residential Energy Storage Series 5,5 – 10 – 15kWh

### MECHANICAL SPECIFICATIONS

Part Number	247 RES 5.5	247 RES 10	247 RES 15
Weight	41Kg	117Kg	132Kg
Dimensions (WxHxD)	470x510x175 (mm)	730x850x178 (mm)	645x1000x202(mm)
Mount Options	Wall or floor mount	Wall or floor mount	Wall or floor mount

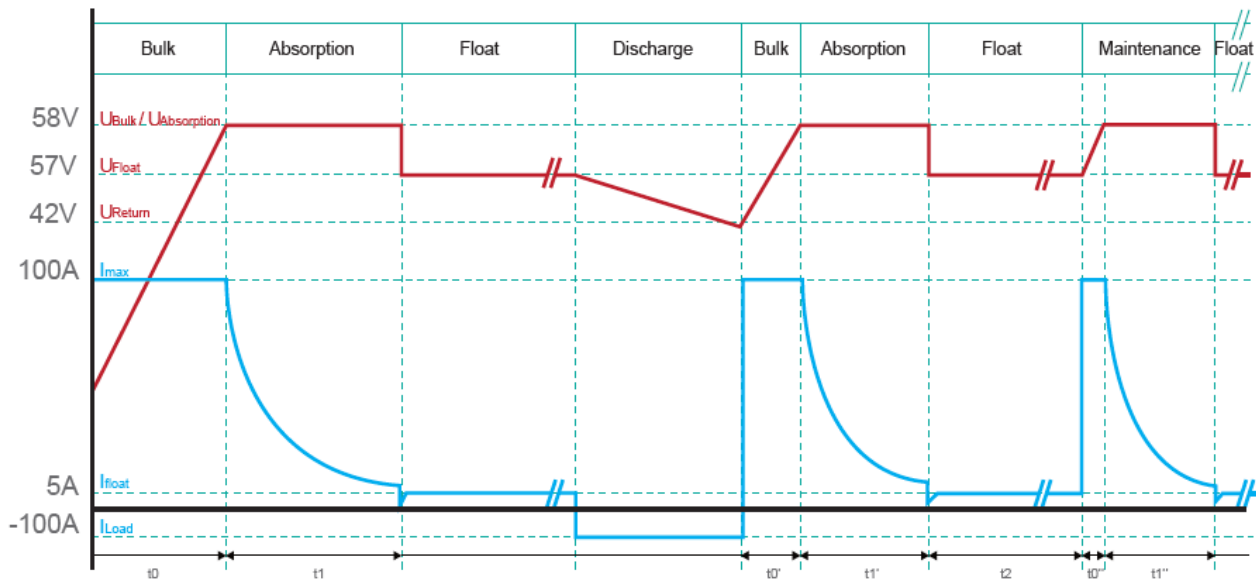
Dimensions and weight differ slightly for each batch. Contact 247 Energy for additional information.

### COMPLIANCE INFORMATION

#### ENVIRONMENTAL SPECIFICATIONS

Safety <sup>2</sup>	IEC62619, IEC62040	Environmental Protection	Indoor, IP20
		Operating Humidity	0~90% RH Non-condensing
Transport	UN38.3, MSDS	Charge Temperature	0°C~+55°C
		Discharge Temperature	-20°C~+60°C
CE	EN 62133:2013, EN 55032:2015+AC:2016, EN 55035:2017, EN 61000-3- 2:2014, EN 61000-3-3:2013	Storage Conditions	-20°C~+40°C
Environmental	RoHS		25% ~ 95%RH
Compatible Inverters	Contact 247		SOC>30%, one full charge needed per two months

### CHARGING/DISCHARGING CURVE



<sup>2</sup> Limited charge at 100A for residential energy storage

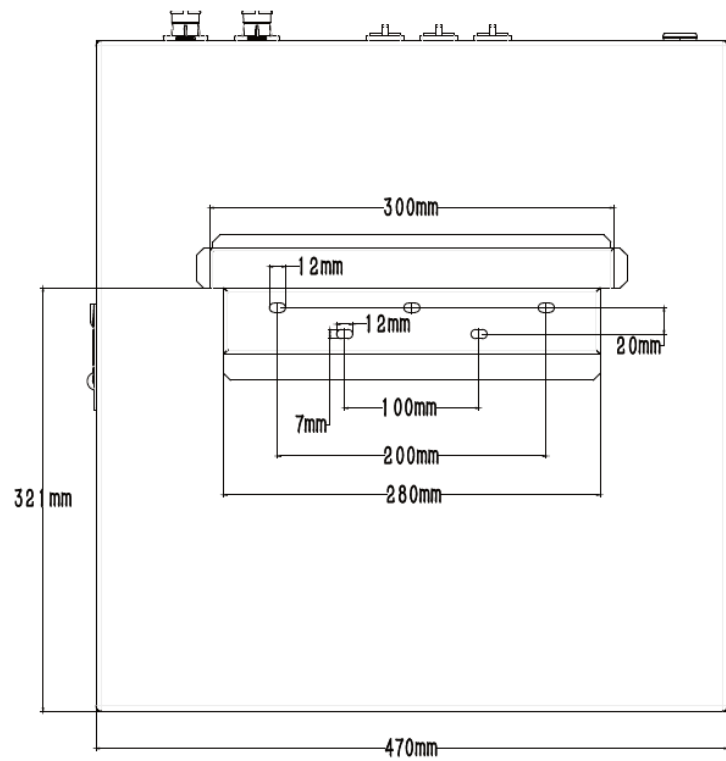
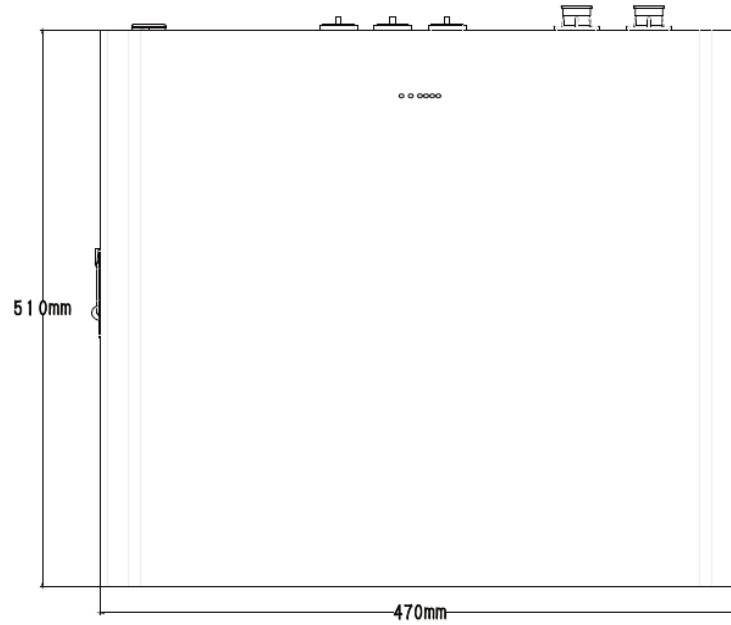
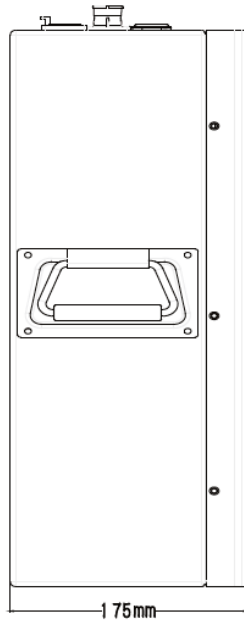
247 Energy BV

Schaarbeekstraat 20 E1.1, 9120 Bevere, Belgium  
Steenoven 44, 5626 DK Eindhoven, The Netherlands  
+32 3331 0000 – storage@247.energy – 247storage.energy

**247**  
ENERGY

**5-15**  
kWh

**247 supercap energy storage datasheet**  
**Residential Energy Storage Series 5,5 – 10 – 15kWh**



247 RES 5.5 P

247 Energy BV

Schaarbeekstraat 20 E1.1, 9120 Bevere, Belgium

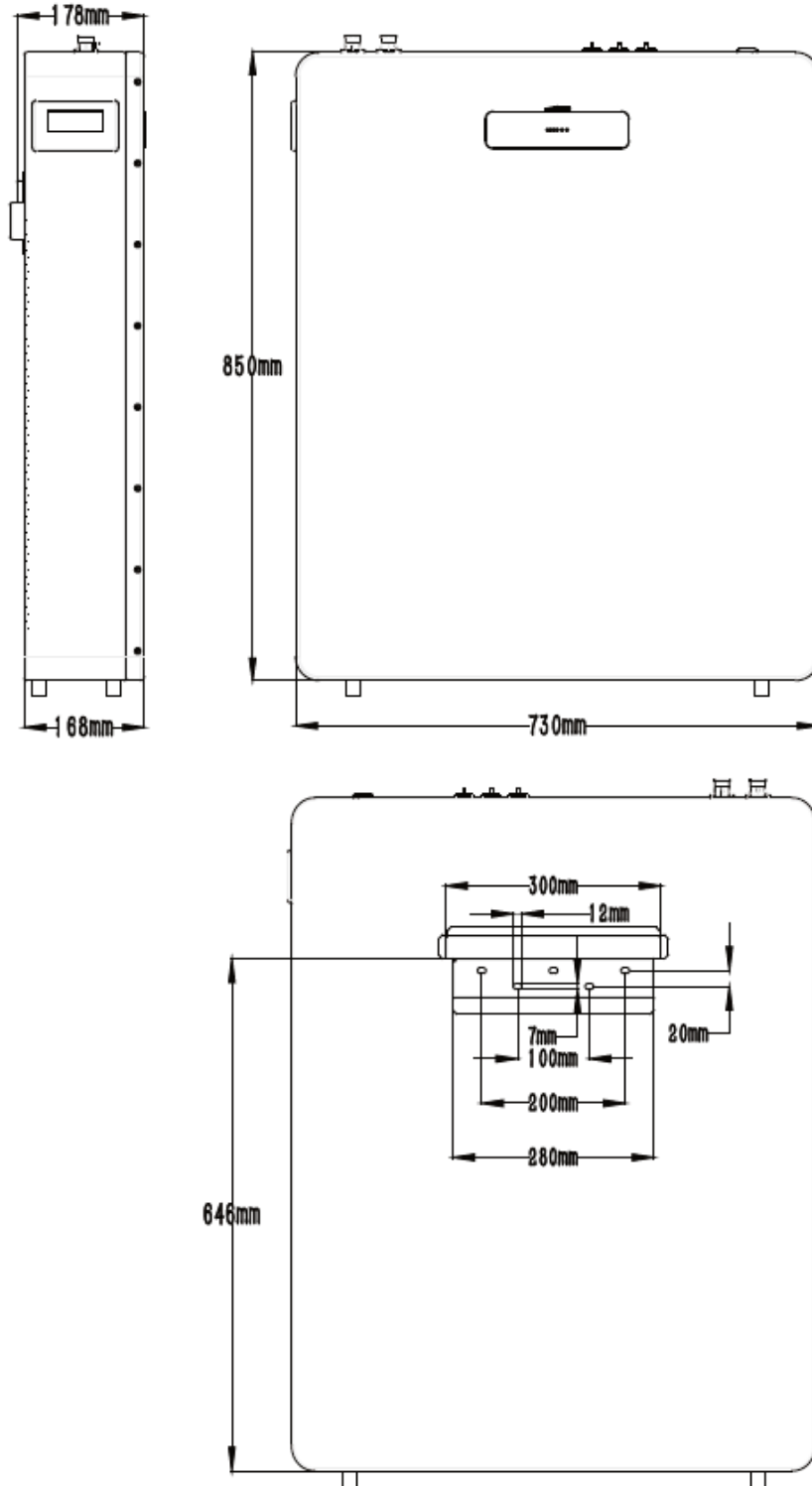
Steenoven 44, 5626 DK Eindhoven, The Netherlands

+32 3331 0000 – storage@247.energy – 247storage.energy

**247**  
ENERGY

**5-15**  
kWh

**247 supercap energy storage datasheet**  
**Residential Energy Storage Series 5,5 – 10 – 15kWh**



247 RES 10 S

**5-15**  
kWh

**247 supercap energy storage datasheet**  
**Residential Energy Storage Series 5,5 – 10 – 15kWh**

**WHY 247 ENERGY ?**

 <p><b>nonflammable</b></p>	 <p><b>10 year</b></p>	 <p><b>+10.000 cycles</b></p>	 <p><b>ultra fast charge</b></p>
 <p><b>supercap tech</b></p>	 <p><b>-20°C ~ 50°C</b></p>	 <p><b>power density</b></p>	 <p><b>no cooling</b></p>
 <p><b>depth discharge</b></p>	 <p><b>slow degradation</b></p>	 <p><b>recyclable</b></p>	 <p><b>sustainable</b></p>

247 Energy BV

Schaarbeekstraat 20 E1.1, 9120 Bevere, Belgium

Steenoven 44, 5626 DK Eindhoven, The Netherlands

+32 3331 0000 – [storage@247.energy](mailto:storage@247.energy) – [247storage.energy](http://247storage.energy)

**247**  
ENERGY